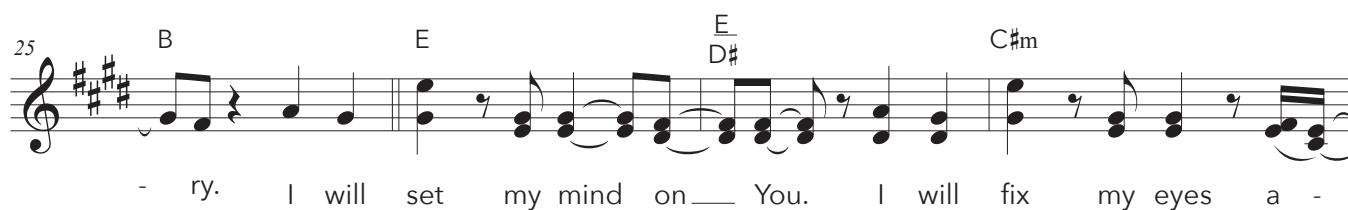
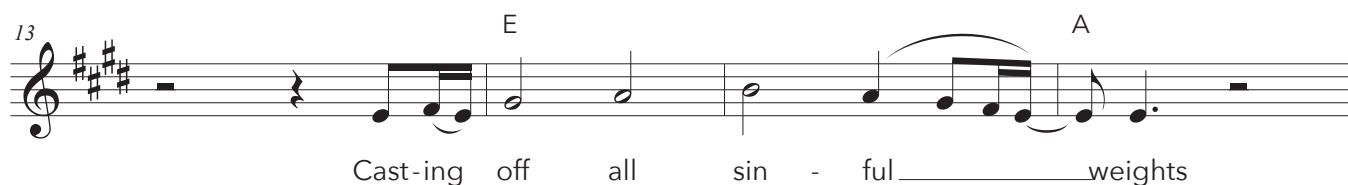
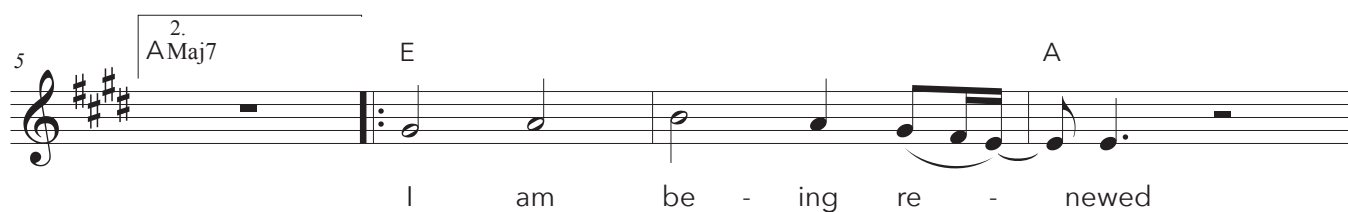
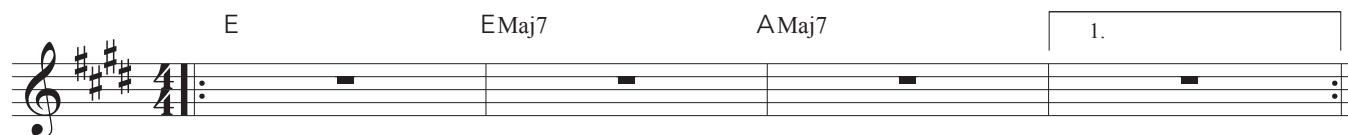


Set My Mind

based on the recording of Kingdom of Your Son

Words & Music by Matt Carpenter & Joel Acieri
Arranged by Matt Carpenter, Joel Acieri, & Keith McMinn

♩ = 72



29 A E E
D#

- bove. There is noth - ing in this ____ world that ev - er com - pares ____

32 1. C#m B A E

____ to You.

36 EMaj7 AMaj7 2. A

to ____

40 A F#m **BRIDGE** E
G#

You. Yet we ____ see now in ____ part like the

44 B C#m A F#m

sha - dow of ____ the dawn. ____ Then in ____ full, face to

47 E
G# B E

____ face like the shin - ing of ____ the sun! ____ Yet we

50 F#m E
G# B

____ see now in ____ part like the sha - dow of ____ the dawn.

53 C#m A F#m E G#

Then in full, face to face like the

56 B E E **CHORUS**

shin - ing of the sun! I will set my mind on

59 E D# C#m A

— You. I will fix my eyes a - bove. There is

62 E D# 3 1. C#m B

noth - ing in this world that ev - er com - pares to

65 A 2. C#m B A 3 C#m B

You. to You. That ev - er com pares to

69 A C#m B A

You. That ev - er com pares to You.

OUTRO

73 E EMaj7 E7 AMaj7 1. Am(Maj7) 2. Am(Maj7) E